

	<b>PROGETTISTA</b>  Tecnologia Ricerca Rischi	<b>COMMESSA</b> NQ/R22178	<b>UNITA'</b> -
	<b>LOCALITA'</b> RAVENNA (EMILIA ROMAGNA)	<b>DIS-MEC-B-13016</b>	
	<b>PROGETTO / IMPIANTO</b> FSRU Ravenna e Collegamento alla Rete Nazionale Gasdotti		<b>Rev.</b> 0

Rif. TRR: 72341

**EMERGENZA GAS**  
**INCREMENTO DI CAPACITÀ DI RIGASSIFICAZIONE (DL 17.05.2022, n. 50)**  
**FSRU Ravenna e Collegamento alla Rete Nazionale Gasdotti**

**Rapporto Preliminare di Sicurezza**  
**per la fase di Nulla Osta di Fattibilità (NOF)**  
**ai sensi del D.Lgs. 105/15**

**ALLEGATO C.8.1-C**  
**Planimetrie Del Sistema Di Rivelazione Gas E Incendi FSRU**

0	Emissione per permessi	A. Visigoti	A. Romano	G. Romano	06/07/2022
<b>Rev.</b>	<b>Descrizione</b>	<b>Elaborato</b>	<b>Verificato</b>	<b>Approvato</b>	<b>Data</b>



Illustration 4.12a Fixed Gas Sampling System (1/3)

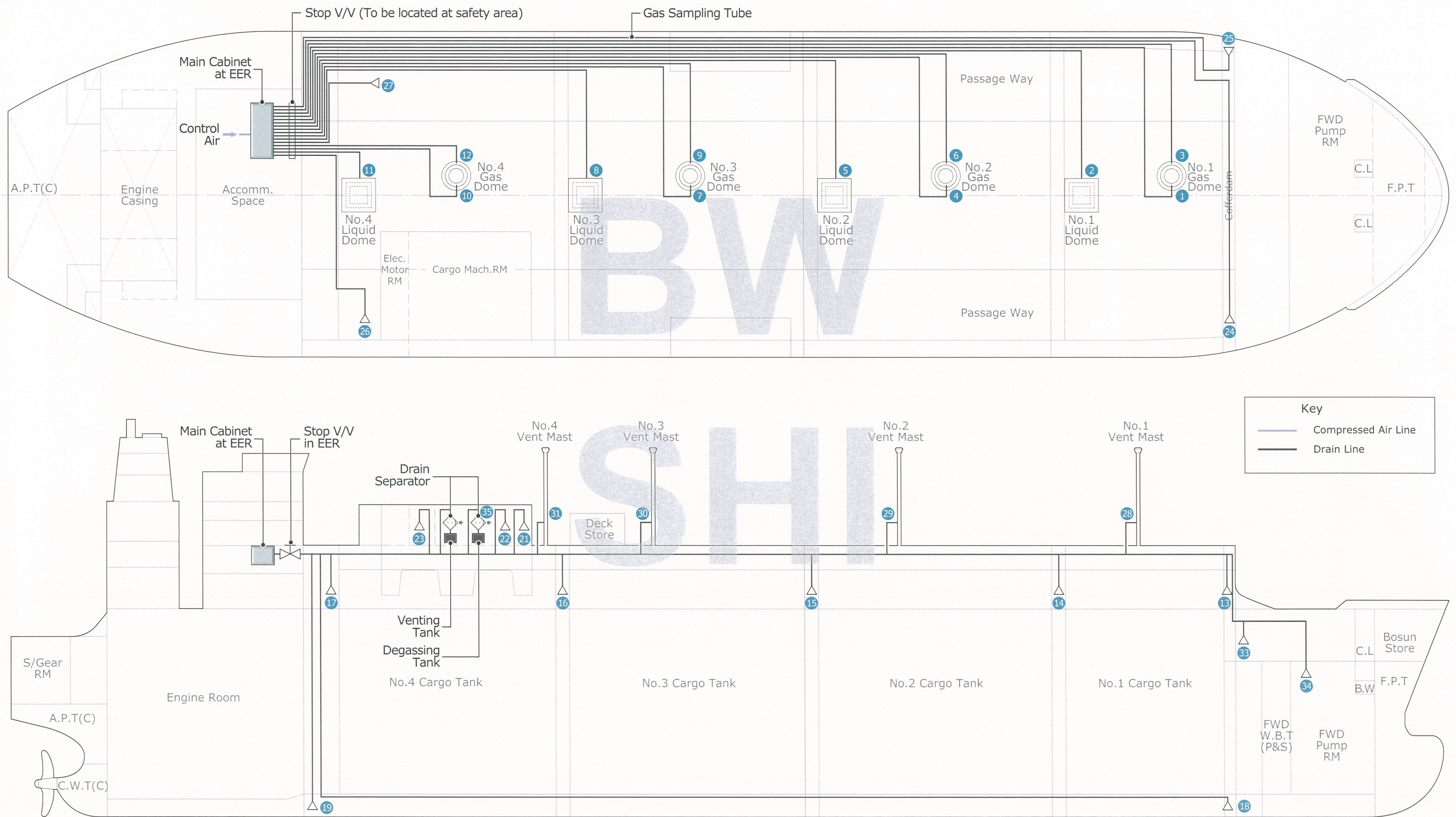




Illustration 4.12b Fixed Gas Sampling System (2/3)

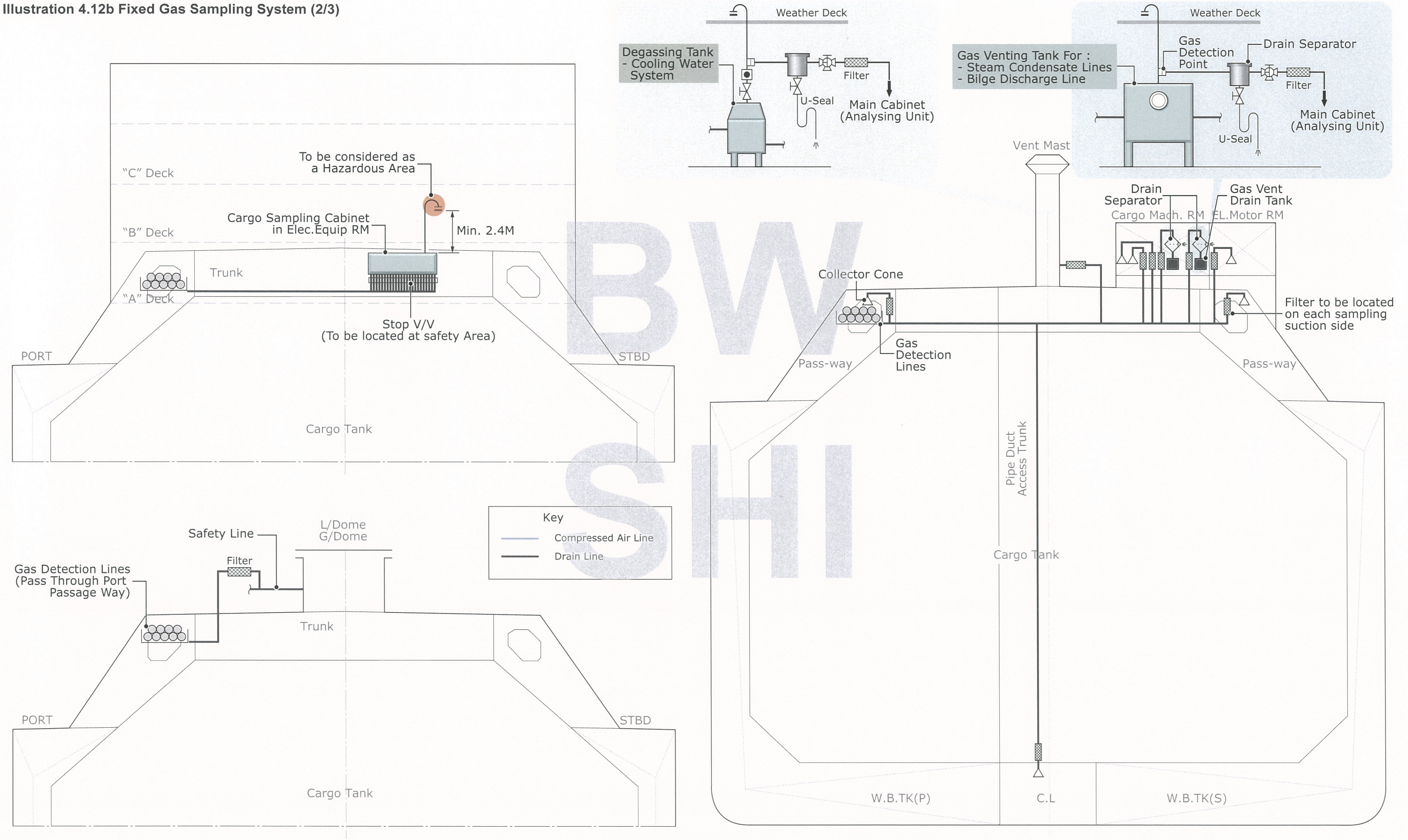




Illustration 4.12c Fixed Gas Sampling System for Regas (3/3)

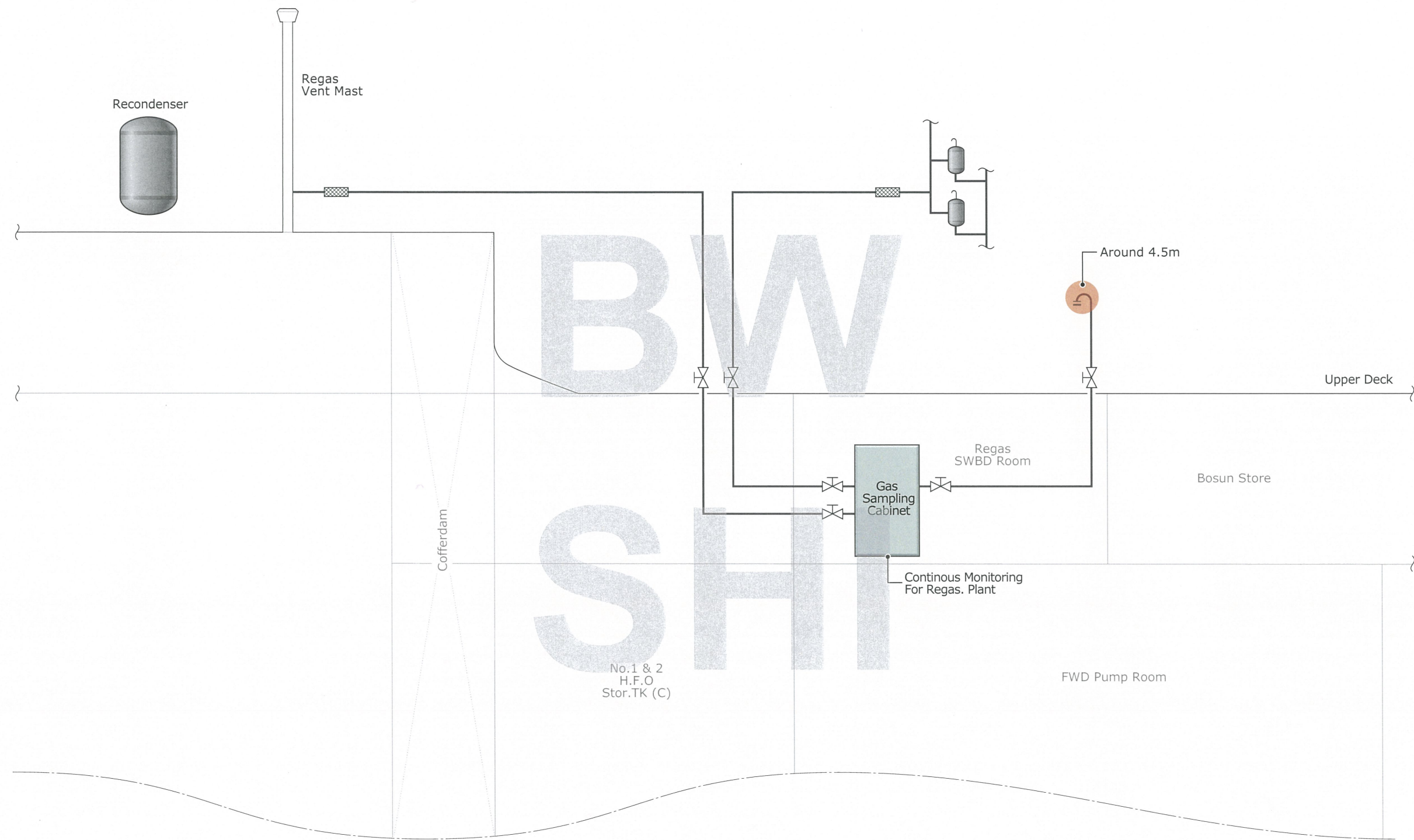


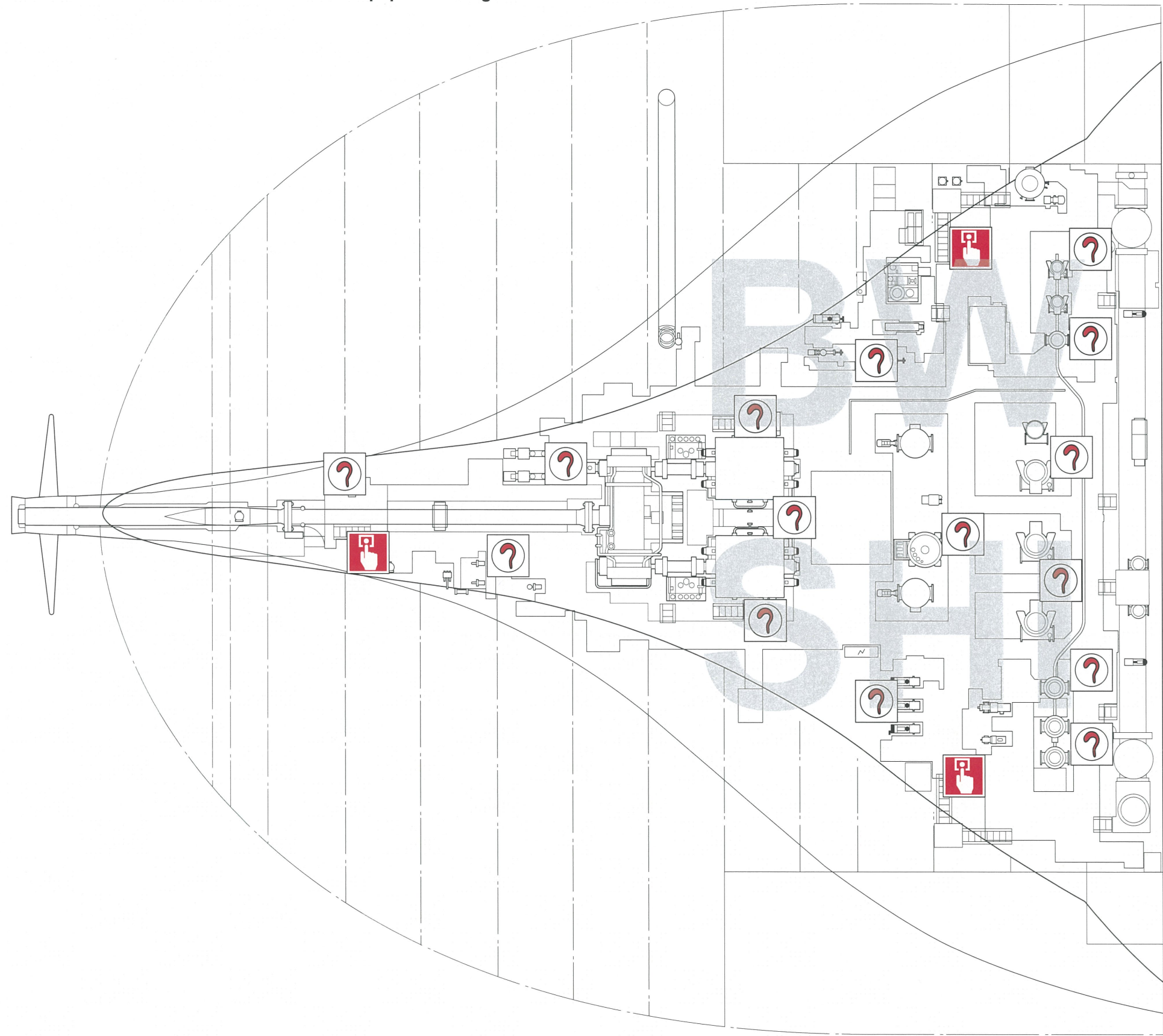


Illustration 8.9b Fire Detection System Symbols


Key	
	Fire Alarm Central Cabinet
	Fire Control / Repeater Panel
	Fire Repeater Panel
	Manually Operated Call Point
	Spaces or Group of Spaces Monitored by Heat Detector
	Spaces or Group of Spaces Monitored by Gas Detector
	Smoke Detector for Fire Alarm
	Smoke Detector for Water Mist Local Fire Fighting System
	Flame Detector for Fire Alarm
	Flame Detector for Water Mist Local Fire Fighting System
F.G.E	Electric Horn with Rating Light (Gen./Fire)




Illustration 8.9c Fire Detection and Alarm Equipment - Engine Room Floor Plan



Key



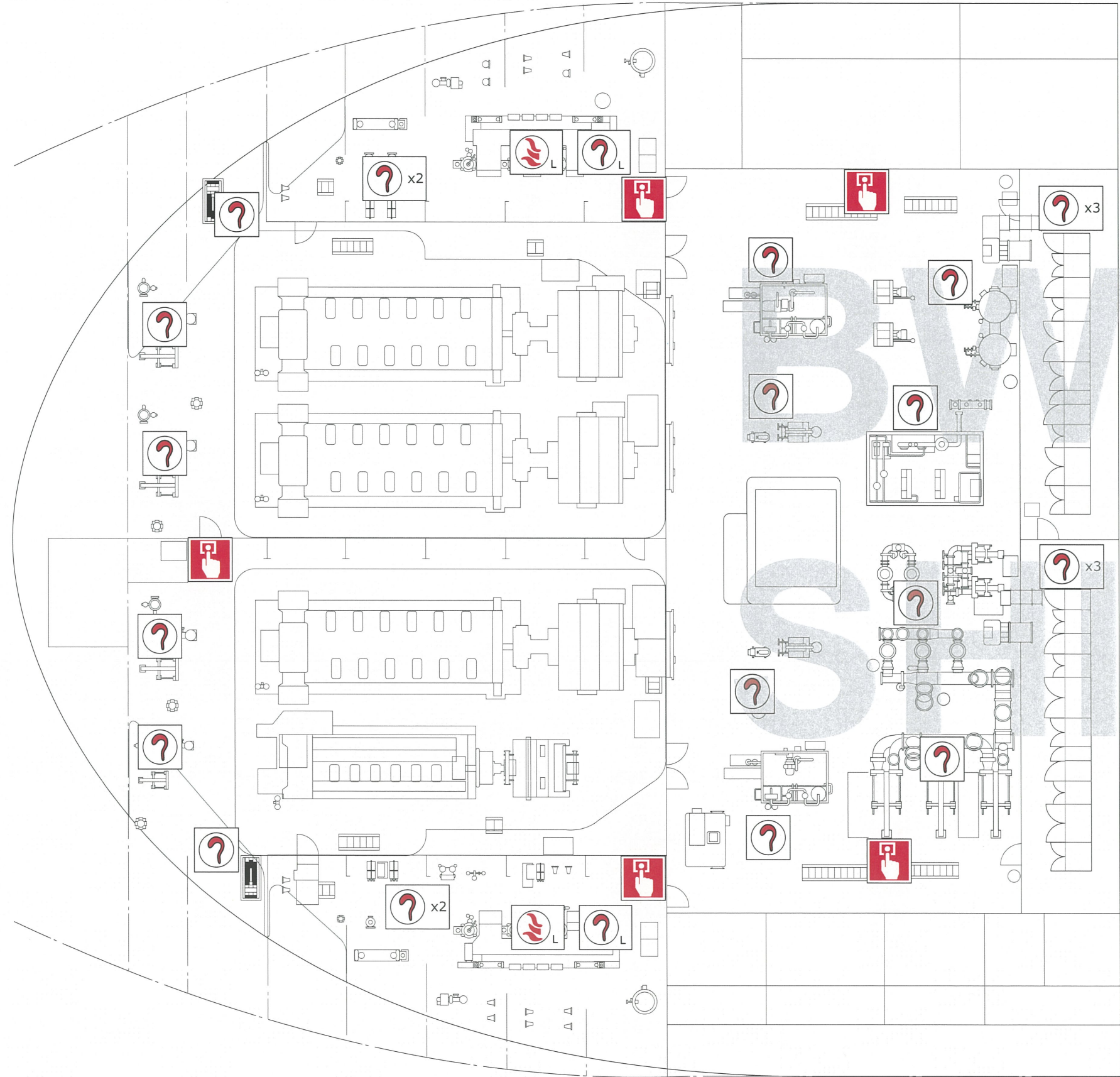
Manually Operated Call Point



Smoke Detector for Fire Alarm



Illustration 8.9d Fire Detection and Alarm Equipment - Engine Room 4th Deck



Key





-  Manually Operated Call Point
-  Smoke Detector for Fire Alarm
-  Smoke Detector for Water Mist Local Fire Fighting System
-  Flame Detector for Water Mist Local Fire Fighting System

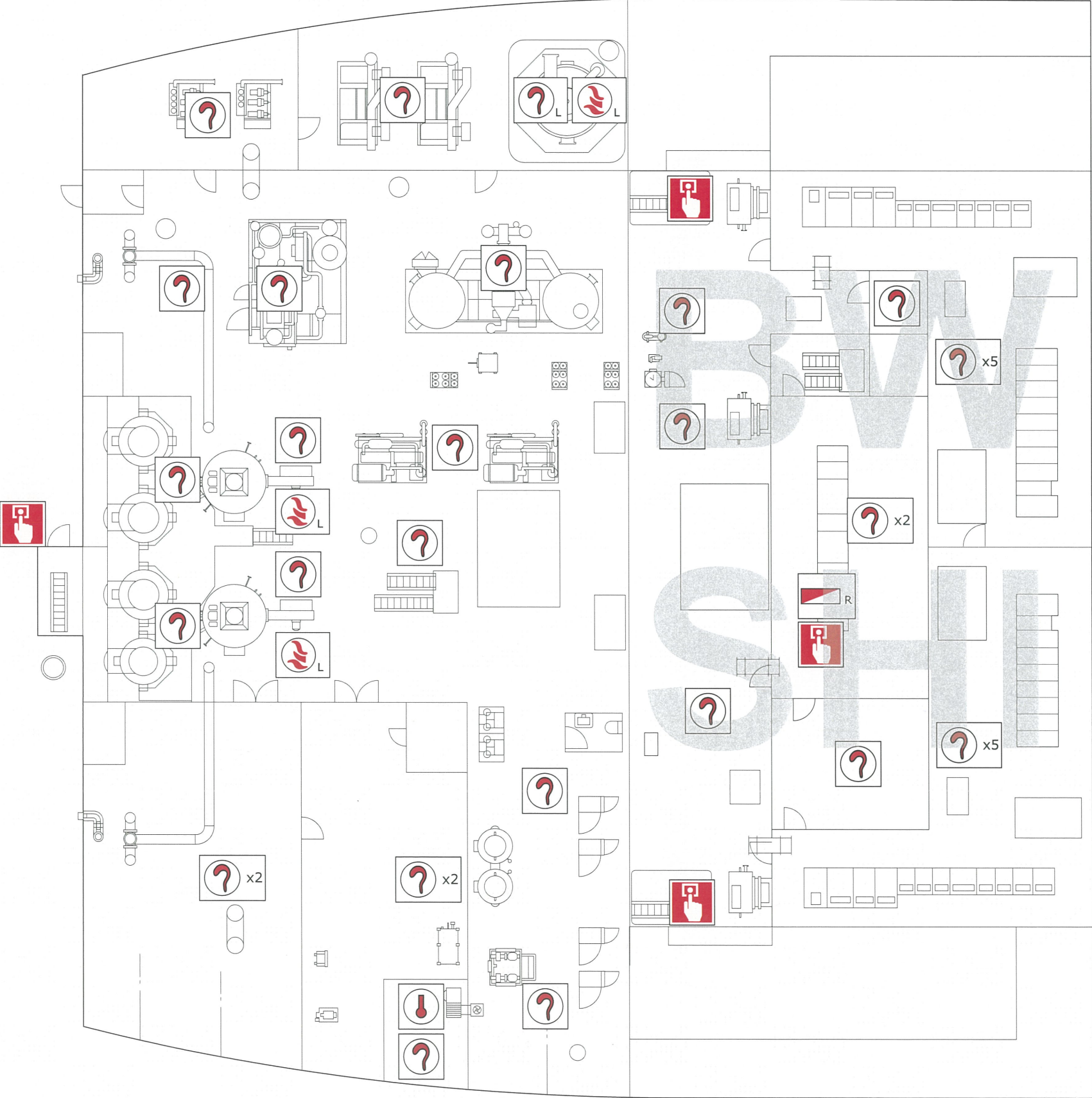


Illustration 8.9e Fire Detection and Alarm Equipment - Engine Room 3rd Deck







Illustration 8.9f Fire Detection and Alarm Equipment - Engine Room 2nd Deck




Key




Manually Operated Call Point




Spaces or Group of Spaces Monitored by Heat Detector




Smoke Detector for Water Mist Local Fire Fighting System



Smoke Detector for Fire Alarm



Flame Detector for Water Mist Local Fire Fighting System



R Fire Repeater Panel



Illustration 8.9g Fire Detection and Alarm Equipment - Accommodation Upper Deck





### Illustration 8.9h Fire Detection and Alarm Equipment - Cargo Machinery Room/Electric Motor Room

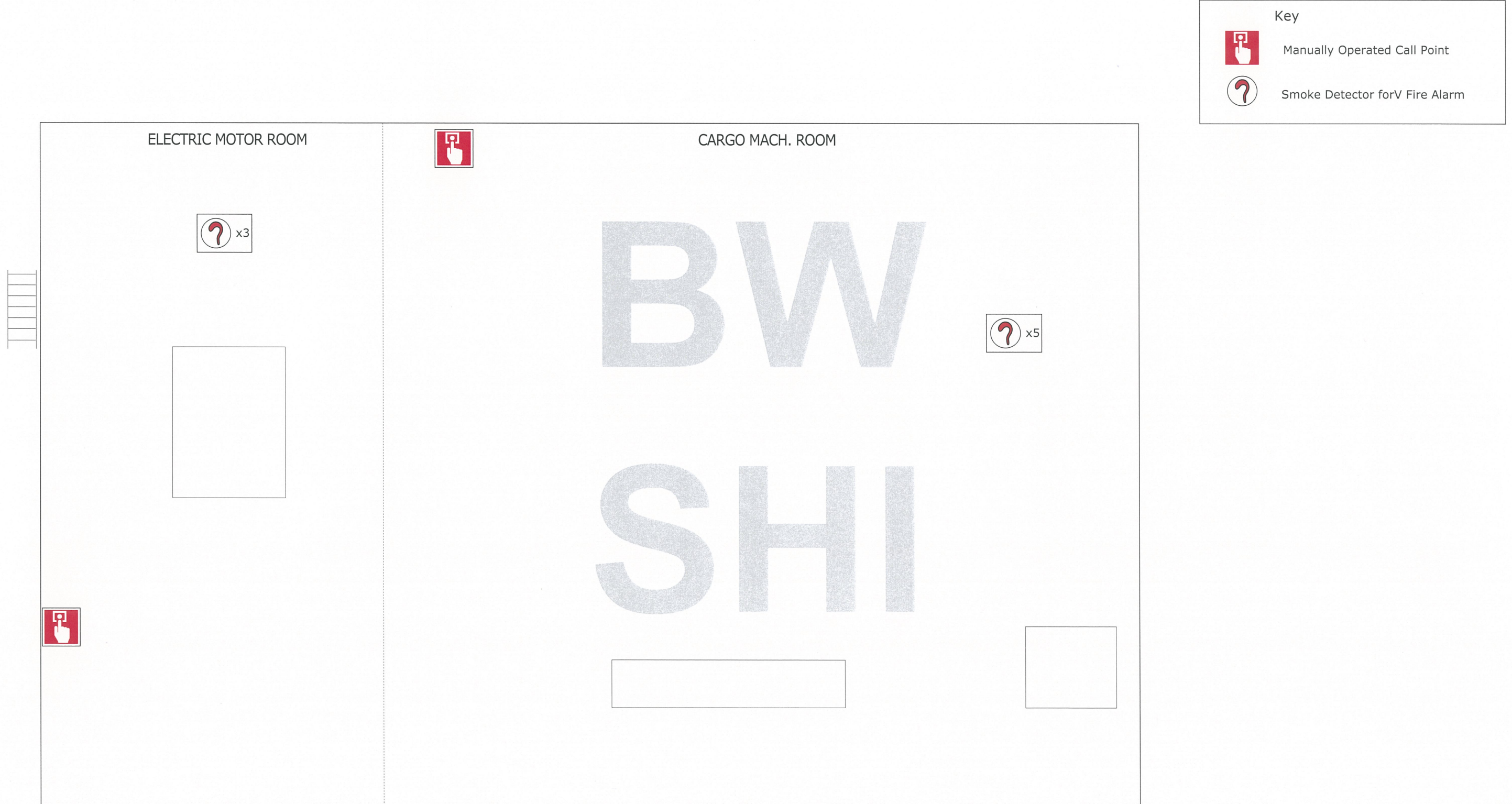




Illustration 8.9i Fire Detection and Alarm Equipment - A Deck





Illustration 8.9j Fire Detection and Alarm Equipment - B Deck

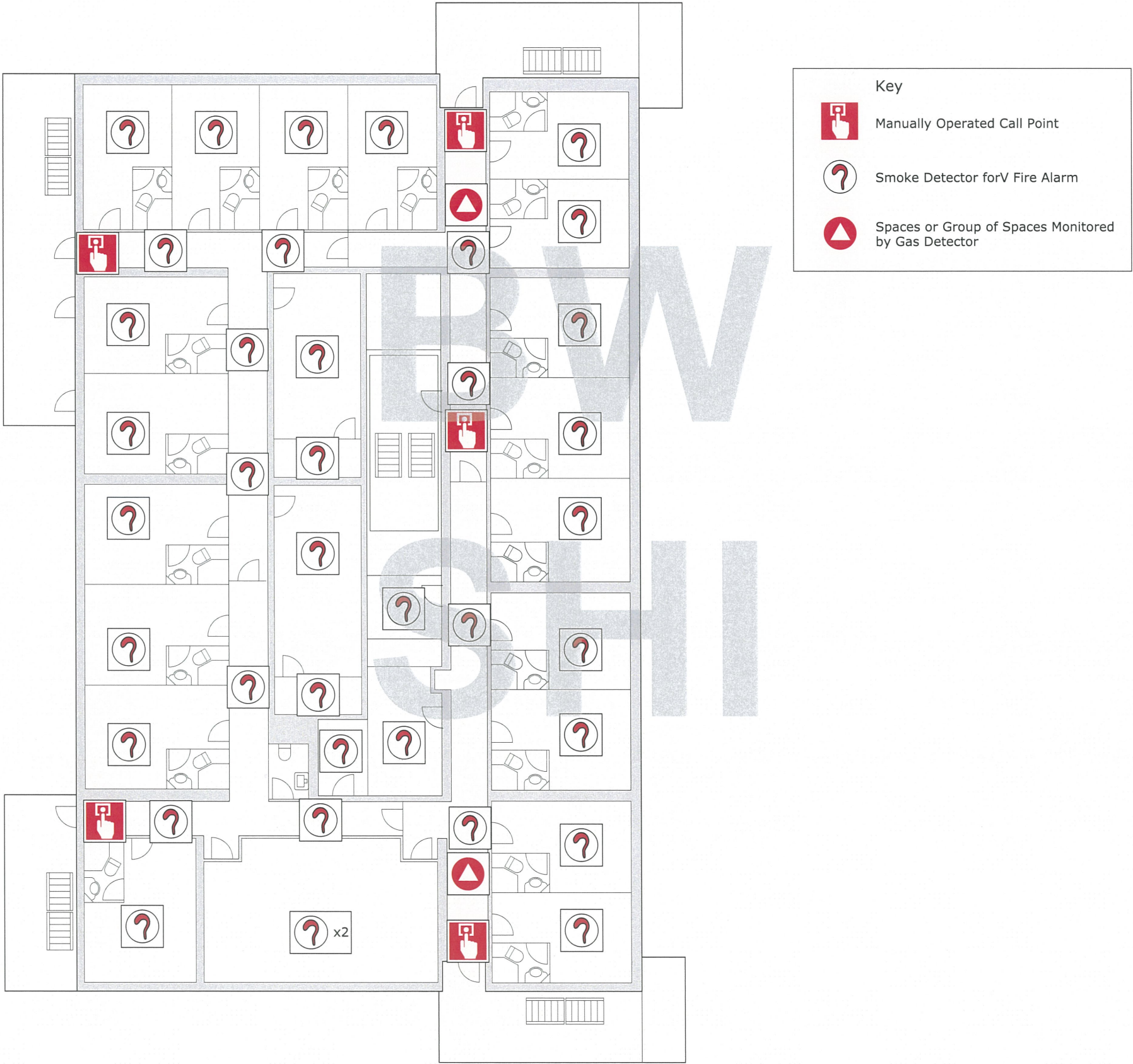




Illustration 8.9k Fire Detection and Alarm Equipment - C Deck

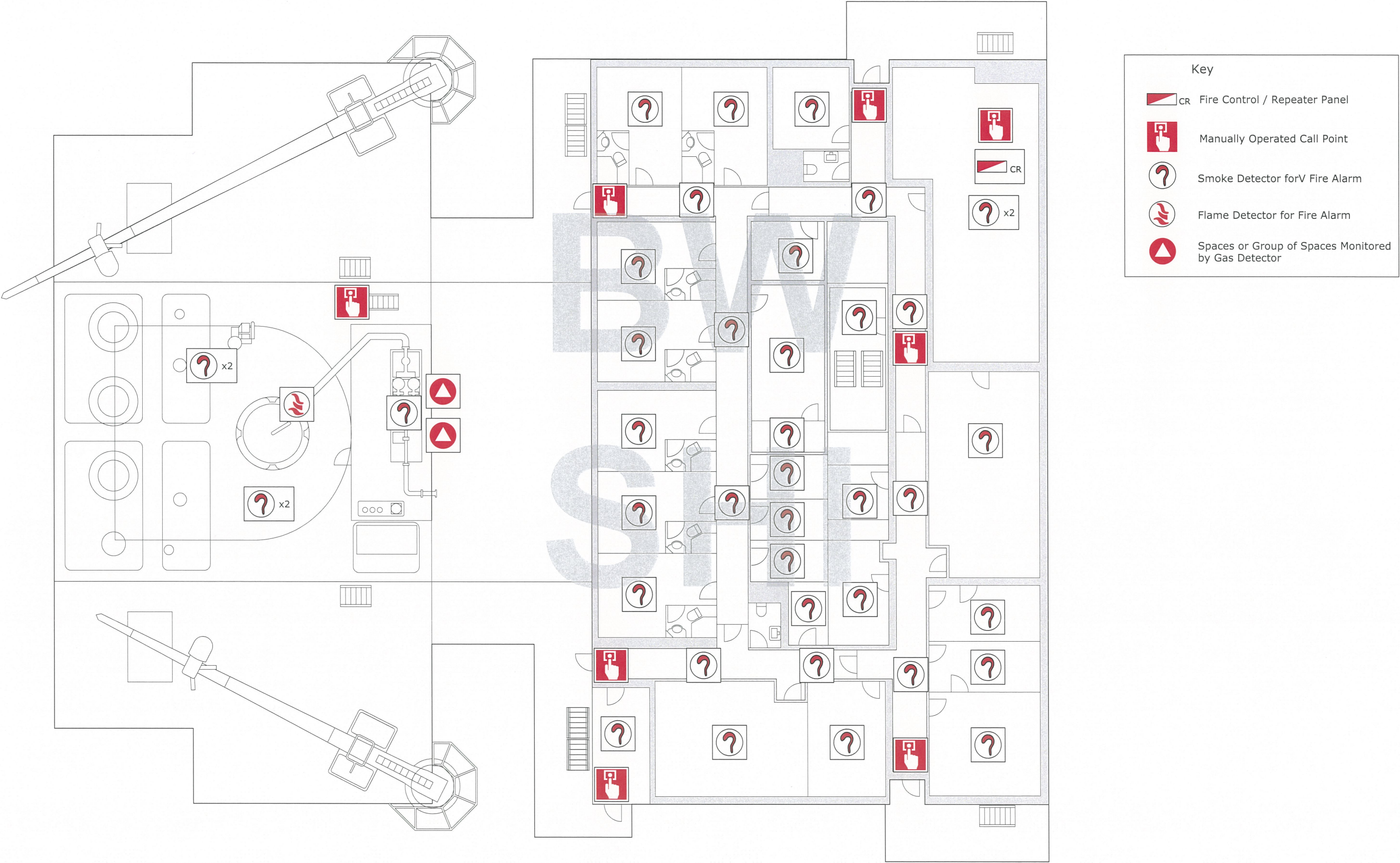
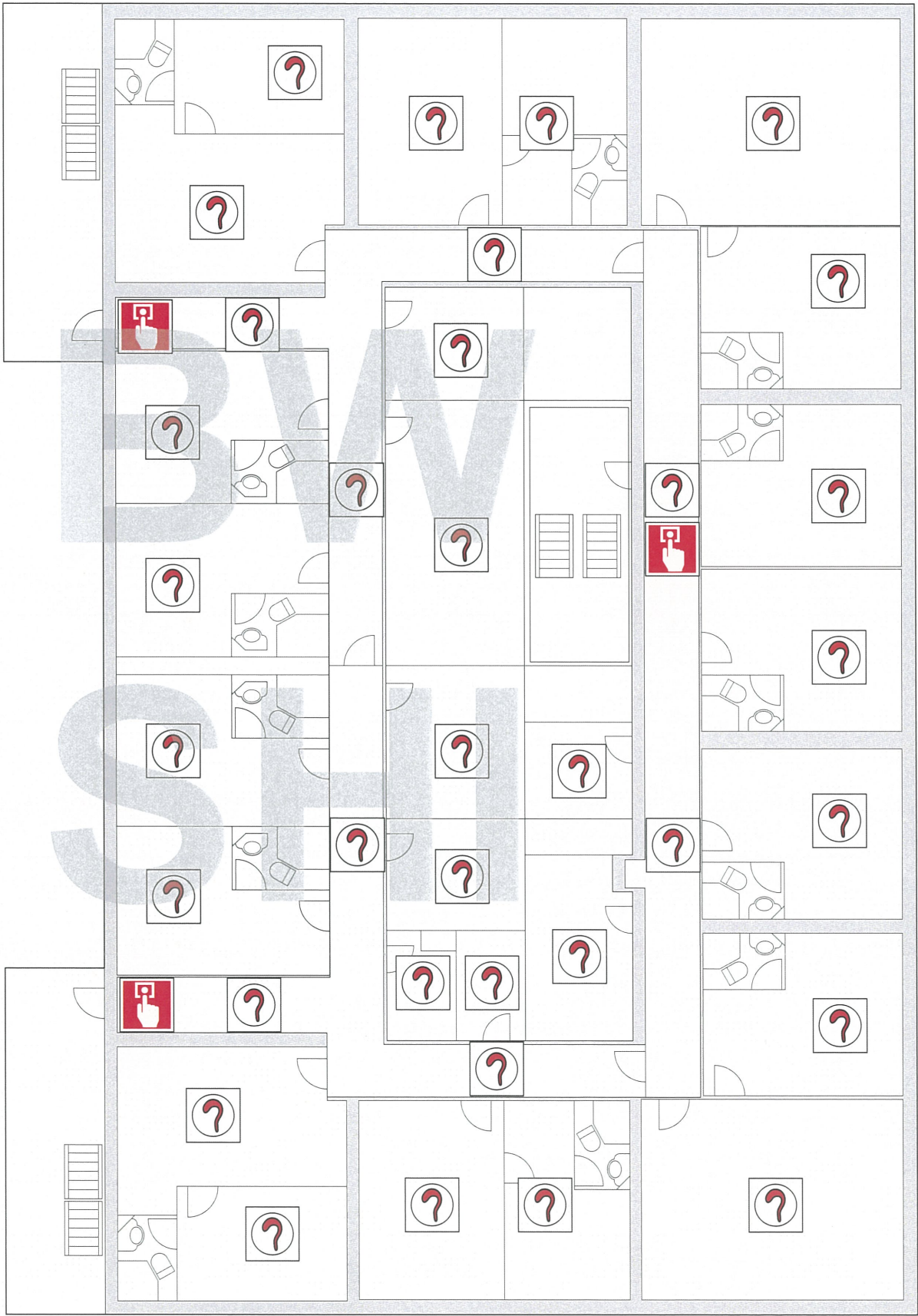
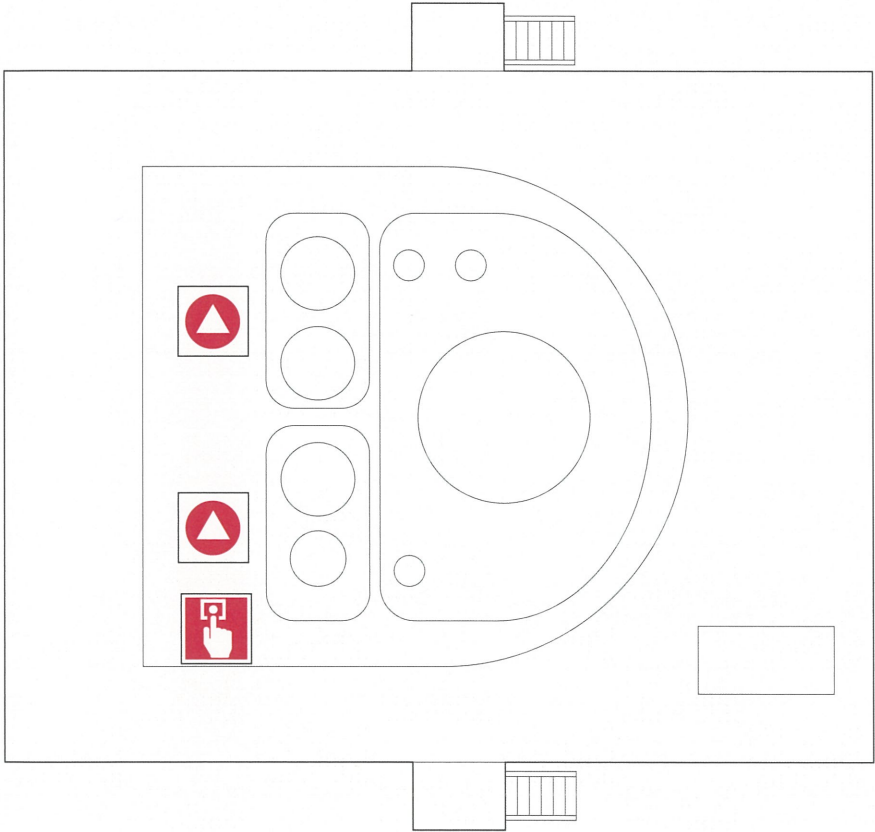




Illustration 8.9I Fire Detection and Alarm Equipment - D Deck



Key




-  Manually Operated Call Point
-  Smoke Detector for V Fire Alarm
-  Spaces or Group of Spaces Monitored by Gas Detector



Illustration 8.9m Fire Detection and Alarm Equipment - Navigation Bridge Deck

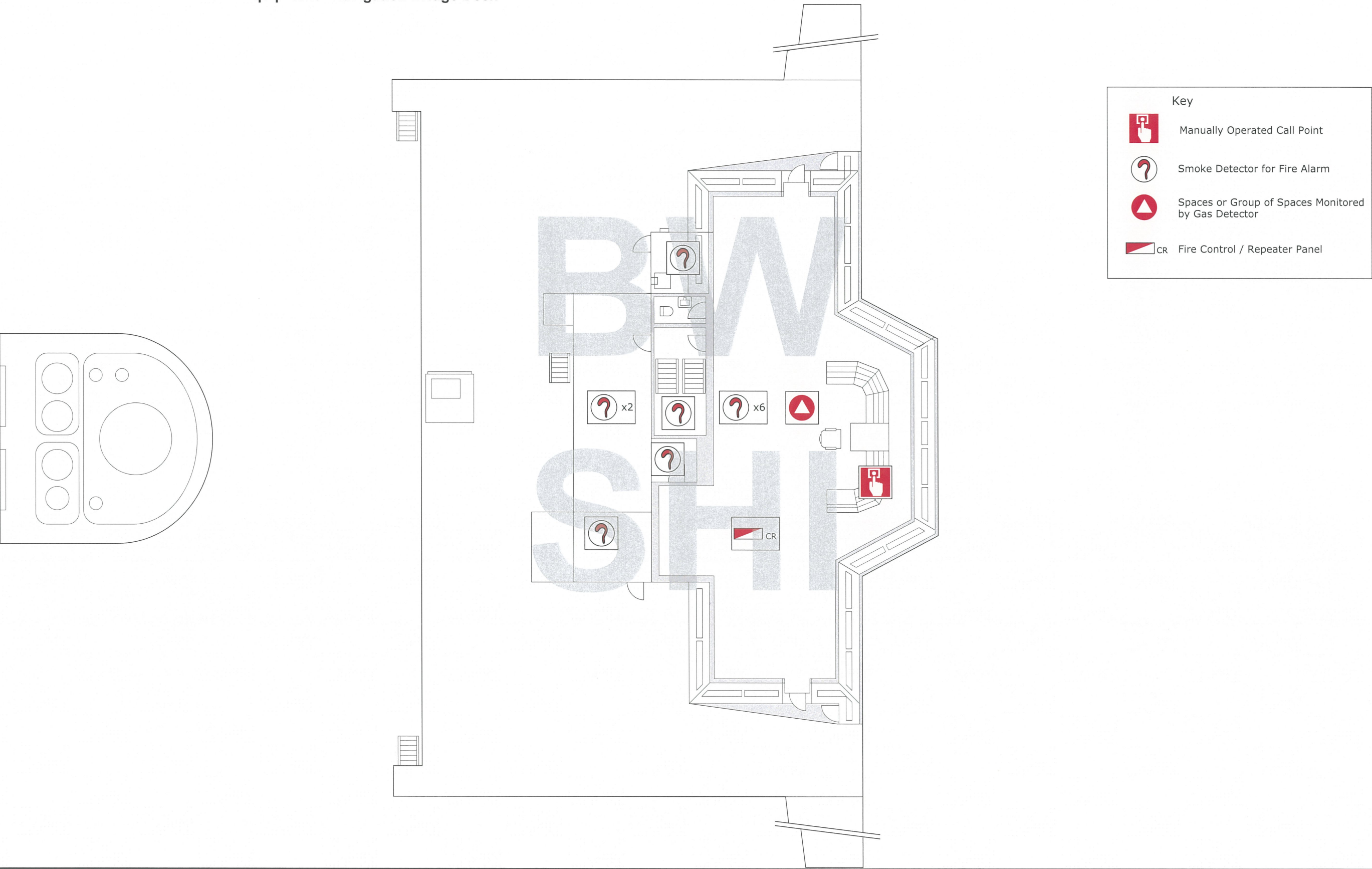




Illustration 8.9n Fire Detection and Alarm Equipment - Bosun Store

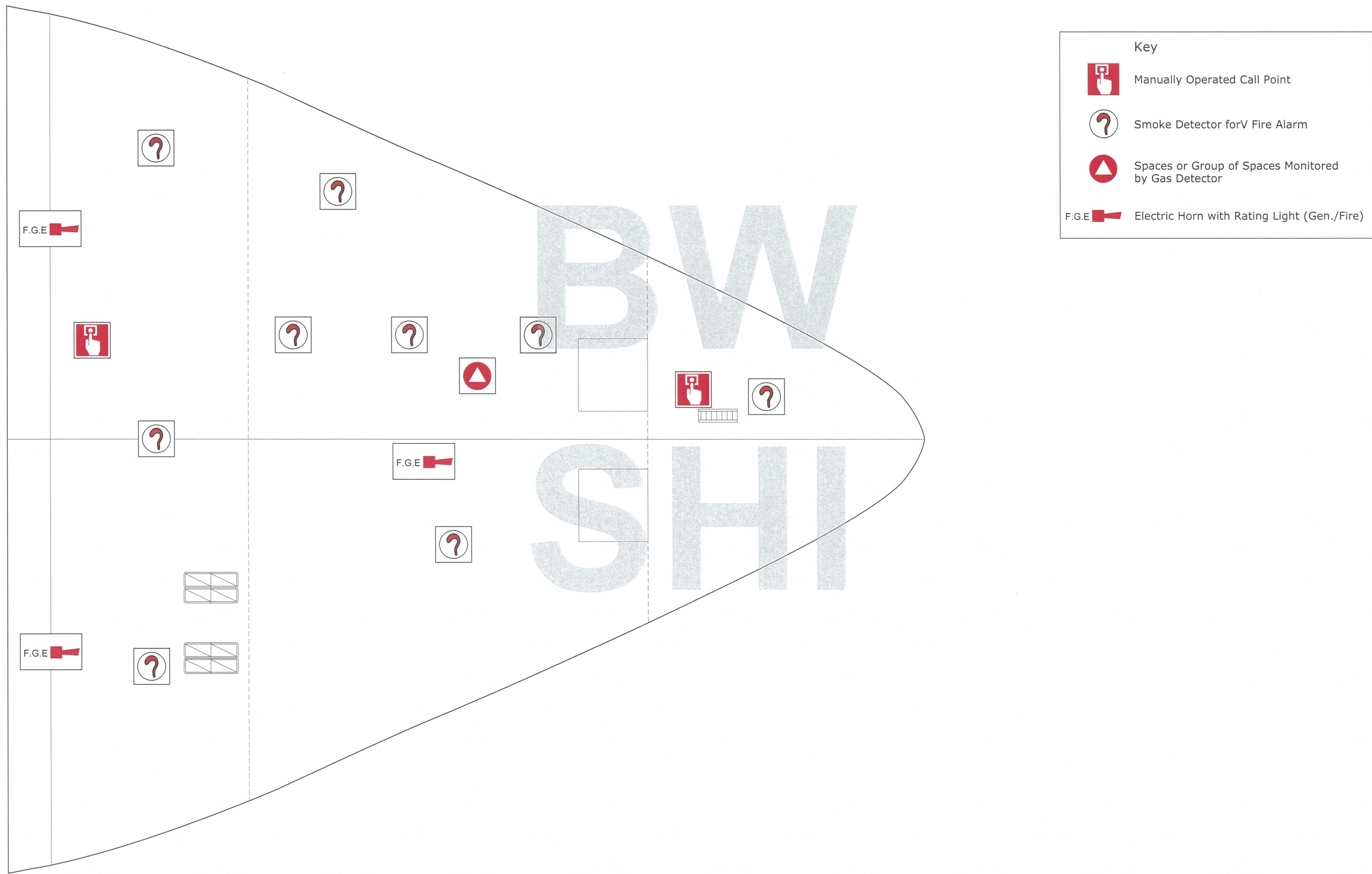
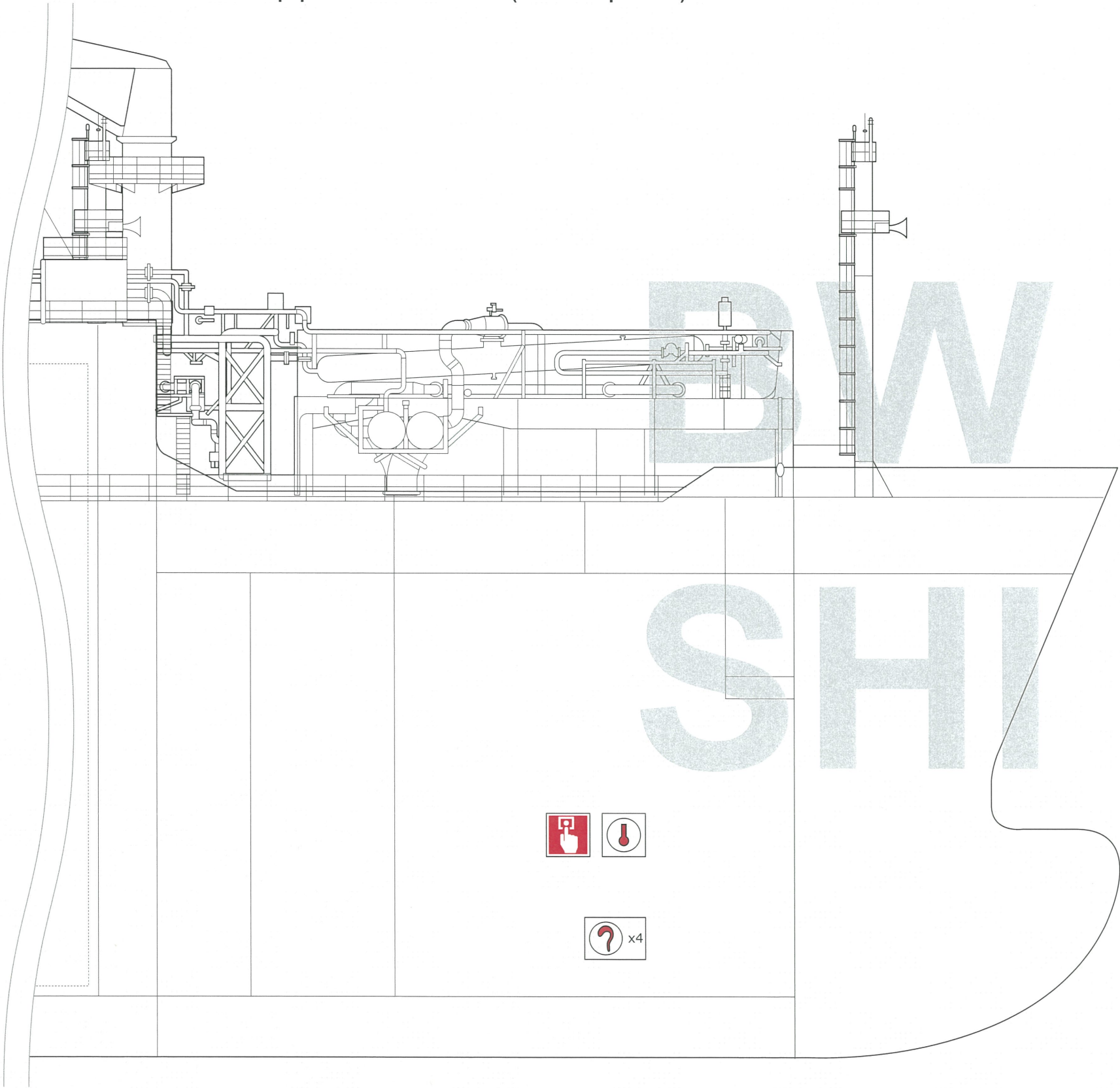







Illustration 8.9o Fire Detection and Alarm Equipment - Side Elevation (FWD Pump Room)



Key

-  Manually Operated Call Point
-  Spaces or Group of Spaces Monitored by Heat Detector
-  Smoke Detector forV Fire Alarm